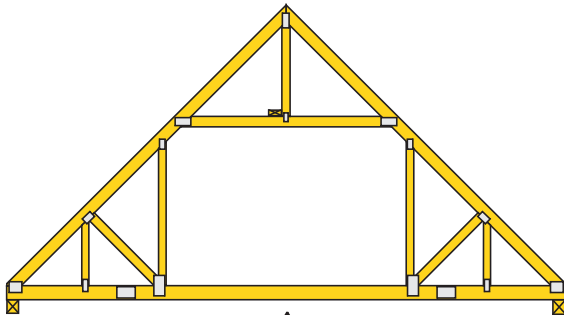
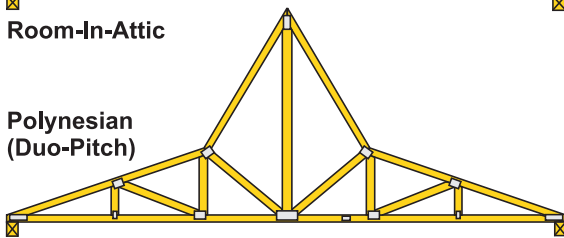


Truss Configurations

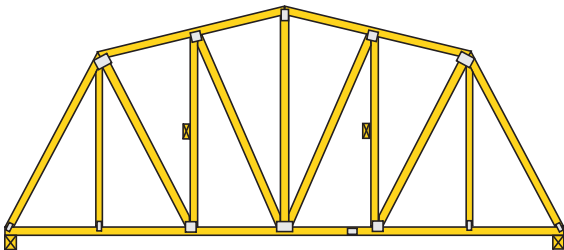
The number of panels, configuration of webs and allowable length of spans will vary according to given applications, building materials and regional conditions. Always refer to an engineered drawing for the actual truss design.



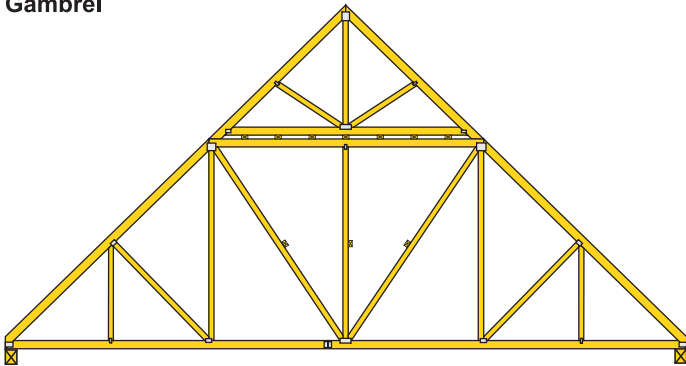
Room-In-Attic



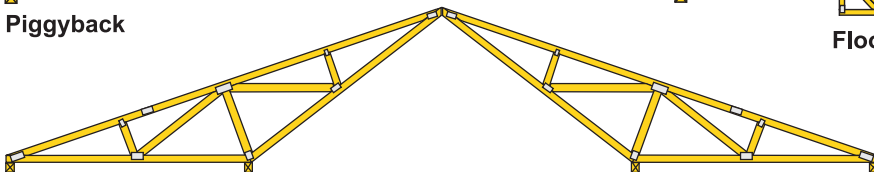
Polynesian
(Duo-Pitch)



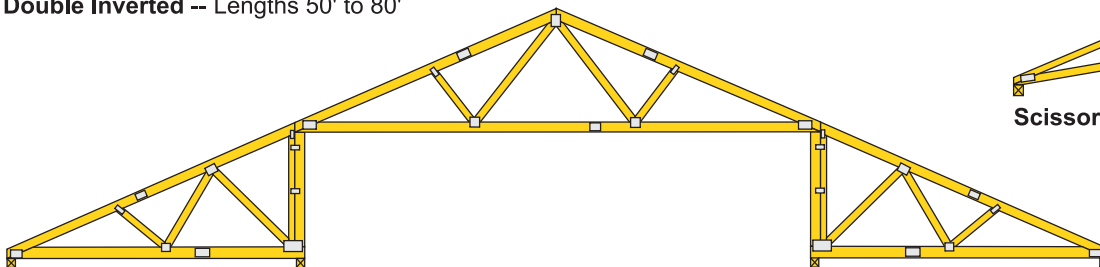
Gambrel



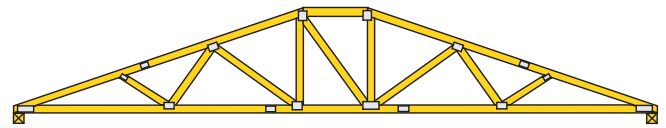
Piggyback



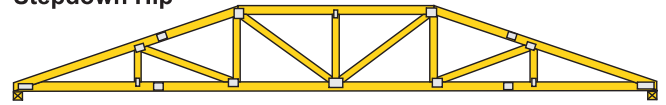
Double Inverted -- Lengths 50' to 80'



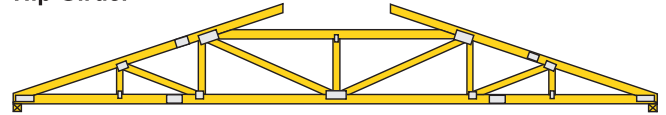
Three Piece Raised Center Bay -- Lengths 50' to 100'+



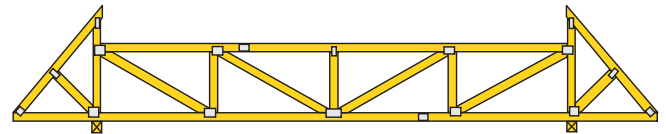
Stepdown Hip



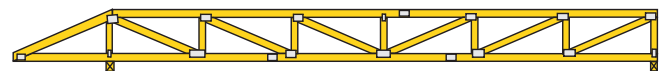
Hip Girder



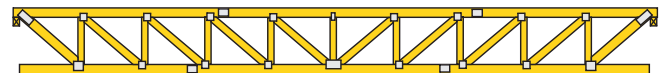
California Hip



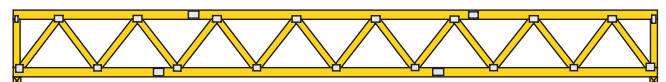
Double Cantilever With Parapets



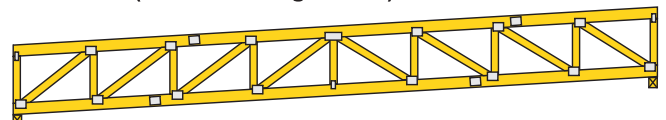
Flat Truss With Cantilever (Pratt Configuration)



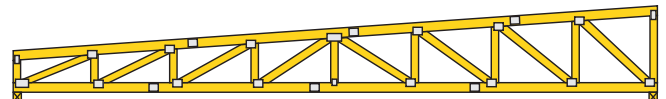
Top Chord Bearing Flat Truss (Pratt Configuration)



Flat Truss (Warren Configuration)



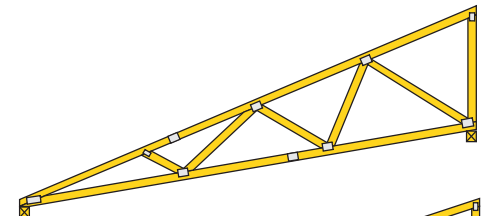
Sloping Parallel Chords (Howe Configuration)



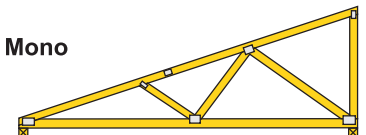
Sloping Top Chord (Howe Configuration)



Floor Truss (System 42 - Modified Warren Configuration)



Scissors Mono



Mono