

Truss Configurations



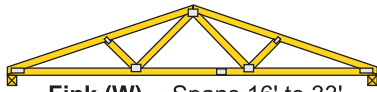
Wood trusses are pre-built components that function as structural support members. A truss commonly employs one or more triangles in its construction. The wood truss configurations illustrated here are a representative sampling.



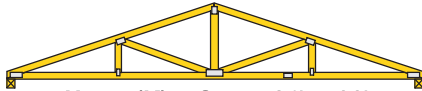
King Post -- Span Up to 16'



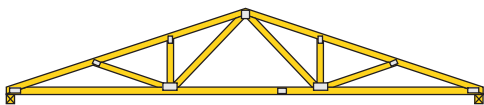
Queen Post (Fan) -- Spans 10' to 22'



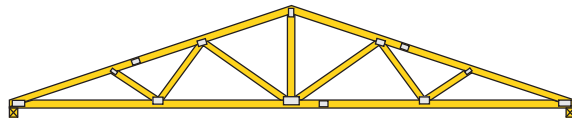
Fink (W) -- Spans 16' to 33'



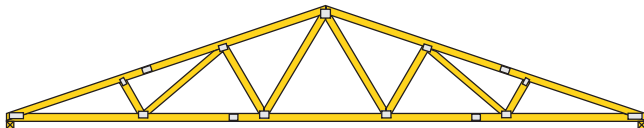
Howe (K) -- Spans 24' to 36'



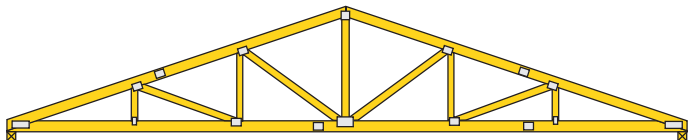
Fan (Double Fan) -- Spans 30' to 36'



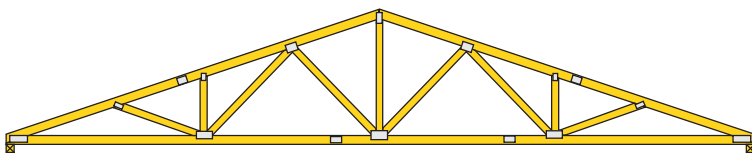
Modified Queen (Multi-Panel) -- Spans 32' to 44'



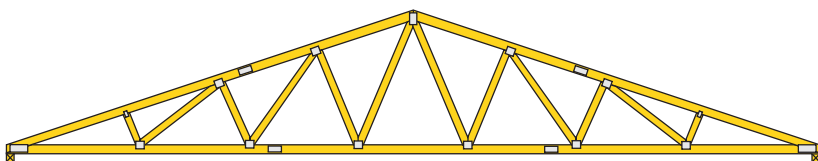
Double Fink (WW) -- Spans 40' to 60'



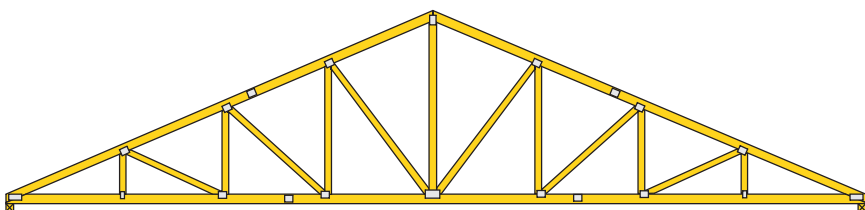
Double Howe (KK) -- Spans 40' to 60'



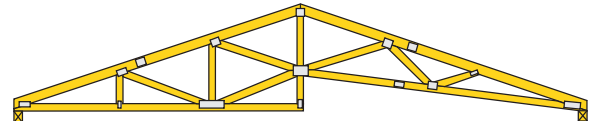
Modified Fan (Triple Fan) -- Spans 44' to 60'



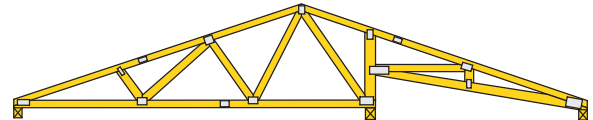
Triple Fink (WWW) -- Spans 54' to 80'



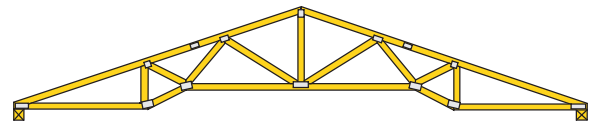
Triple Howe (KKK) -- Spans 54' to 80'



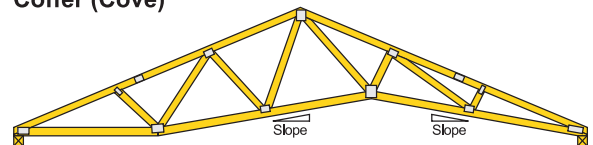
Vault - Two Bearing Points



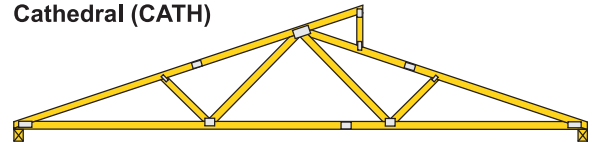
Vault - Three Bearing Points



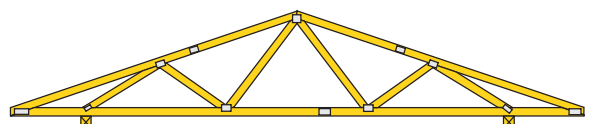
Coffer (Cove)



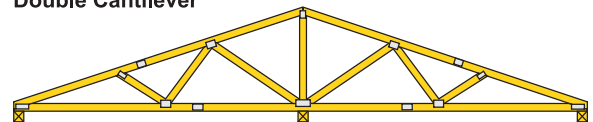
Cathedral (CATH)



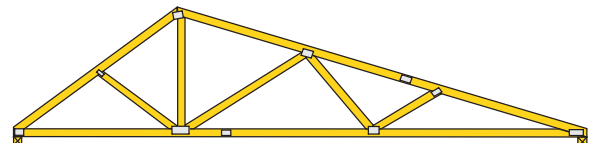
Clear Story



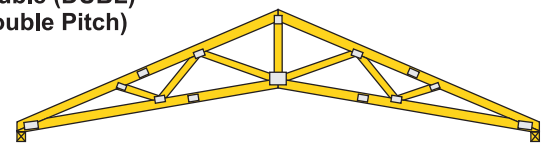
Double Cantilever



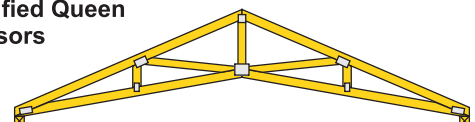
Tri-Bearing



**Double (DUBL)
(Double Pitch)**



**Modified Queen
Scissors**



Howe Scissors